



Cordless  
angle  
grinder

K 10640



## **SAFETY AND PRECAUTION**

- 1 Consider the work area environment. Do not expose the tool to rain. Do not use the tool in damp or wet locations – Keep work area clean and well lit. Do not use the tool in the present of flammable liquids or gases.
- 2 Guard against electric shock. Avoid body contact with earthed or grounded surfaces.
- 3 Keep children away. Do not let visitors touch the tool. All visitors should be kept away from work area.
- 4 When not in use, the tool should be stored in a dry locked up place, out of reach of children.
- 5 Do not force the tool. It will do the job better and safer at the rate for which it was intended.
- 6 Stay alert. Watch out what you are doing–Use common sense. Do not operate tool when you are tired. Check damaged parts. Before further use of the tool, if a guard or other part is damaged it should be carefully checked to determine that it will operate properly and perform its intended function.
- 7 Check for alignment of moving parts, blinding of moving parts, breakage of parts, mounting and any other condition that may affect its operation.
- 8 A guard or other parts that is damaged should be properly repaired or replaced by an authorized service center unless otherwise indicated in this instruction manual. Have defective switches replaced by an authorized service center. Do not use the tool if switch does not turn it on.
- 9 To ensure the designed operational integrity of power tools, do not remove installed cover or screws.
- 10 Use your tool at lower input than specified on the nameplate, otherwise, the finish may be spoiled and working efficiency reduced by motor overload.
- 11 Do not wipe plastic parts with solvent. Solvents such as gasoline, thinner, benzene, carbon tetrachloride, alcohol, ammonia and oil containing chloric annex may damage and crack plastic parts. Wipe plastic parts with a soft cloth lightly dampened with soap water.
- 12 Dress properly. Do not wear loose clothing or jewellery. Keep your hair, clothing, and gloves away from moving parts.
- 13 Use safety equipment. Always wear eye protection, non-skid safety shoes, and hearing protection.
- 14 Do not overreach. Proper footing and balance enables better control of the tool in unexpected situations.

# PRODUCT SAFETY INSTRUCTIONS

- 1 Disconnect battery pack from tool or place the main switch in the locked or off position before making any adjustments, changing accessories, or storing the tool. Such preventative safety measures reduce the risk of starting the tool accidentally.
- 2 In case of cup-wheels, cones or plugs with a threaded hole intended to be mounted on the machine spindle, critical dimensions and other data shall be given in order to prevent the spindle end from touching the bottom of the hole of the abrasive product.
- 3 Check that speed marked on the grinding wheel is equal to or greater than the rated speed of the grinder.
- 4 Ensure that the grinding wheel dimensions are compatible with the grinder.
- 5 Abrasive wheels shall be stored and handled with care in accordance with manufacturer's instructions.
- 6 Inspect the grinding wheel before use, do not use chipped, cracked or otherwise defective products.
- 7 Ensure that mounted wheels and points are fitted in accordance with the manufacturer's instructions.
- 8 Ensure that blotters are used when they are provided with the bonded abrasive product and when they are required.
- 9 Ensure that the abrasive product is correctly mounted and tightened before use and run the tool at no-load for 15 s in a safe position, stop immediately if there is considerable vibration or if other defects are detected. If this condition occurs, check the machine to determine the cause.
- 10 If a guard is supplied with the tool never use the tool without such a guard.
- 11 Do not use separate reducing bushings or adapters to adapt large hole abrasive wheels.
- 12 For tools intended to be fitted with threaded hole wheel, ensure that the thread in the grinding wheel is long enough to accept the spindle length.
- 13 Check that the work piece is properly supported.
- 14 Do not use cutting off grinding wheel for side grinding.
- 15 Ensure that sparks resulting from use do not create a hazard e.g. do not hit persons, or ignite flammable substances.
- 16 Ensure that ventilation openings are kept clear when working in dusty conditions. If it should become necessary to clear dust, first disconnect the tool from the mains supply (use non metallic objects) and avoid damaging internal parts.
- 17 Always use eye and ear protection.
- 18 Personal protective equipment such as dust mask, gloves, helmet and apron should be worn.
- 19 The grinding wheel continues to rotate after the tool is switched off.

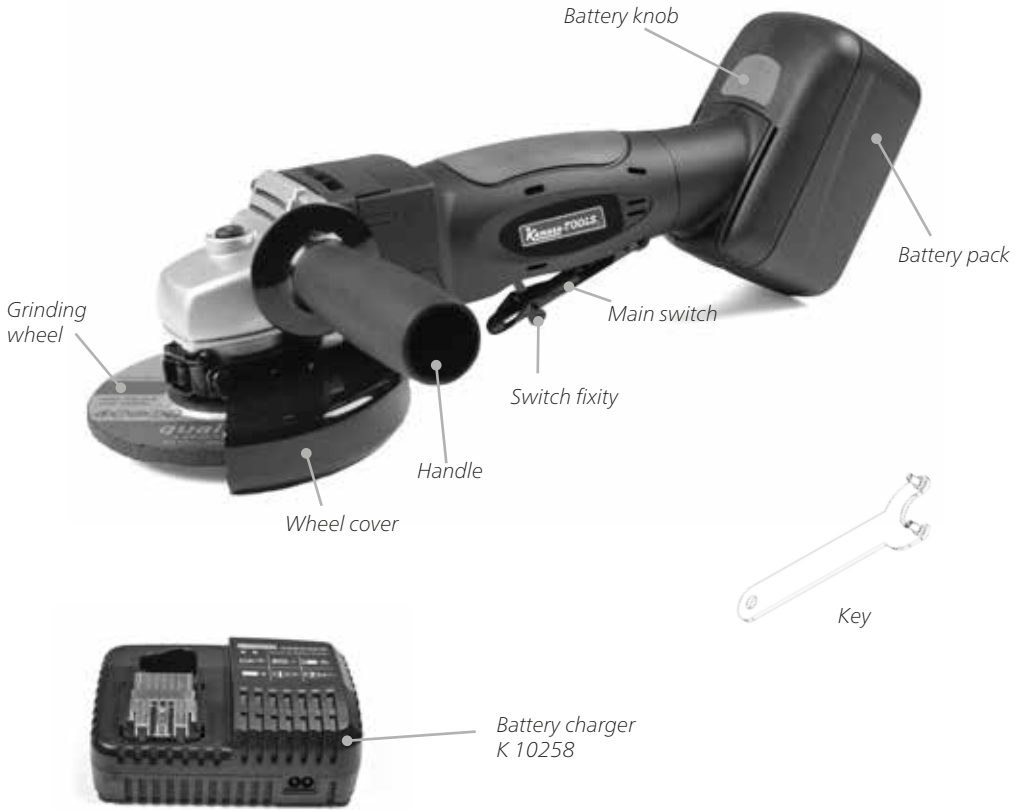
# **IMPORTANT SAFETY INSTRUCTIONS FOR CHARGER & BATTERY PACK**

- 1 **Caution:** To reduce risk of injury, charge only specific type rechargeable battery packs. Other types of battery packs may burst causing personal injury and damage.
- 2 Before using charger, read all instructions and cautionary markings on battery packs and chargers.
- 3 Do not expose charger to rain or snow.
- 4 To reduce the risk of damage to electric plug and cord, pull by plug rather than cord when disconnecting charger.
- 5 Use of an attachment not recommended or sold by the charger manufacture may result in a risk of fire, electric shock, or injury to persons.
- 6 Make sure cord is located so that it will not be stepped on, tripped on, tripped over, or otherwise subjected damage or stress.
- 7 Do not operate charger with damaged cord or plug. Replace them immediately.
- 8 Do not operate charger if it has received a sharp blow, been dropped, or otherwise damage in any way, take it to qualified center.
- 9 To reduce risk of electric shock, unplug charger from outlet before attempting any maintenance or cleaning. Turning off controls will not reduce this risk.
- 10 Do not disassemble charger or battery pack, take it to a qualified service center while repair is required. Incorrect reassembling may result in a risk of electric shock or fire.

## **ADDITIONAL SAFETY RULES FOR CHARGER & BATTERY PACK**

- 1 Do not charge battery pack when temperature is below 10°C (50°F) or above 40°C (104°F).
- 2 Do not attempt to use a set-up transformer, an engine generator or DC power receptacle.
- 3 Do not allow anything to cover or clog the charger vents.
- 4 Always cover the battery pack terminals with the battery pack cover when the battery pack is not used.
- 5 Do not short circuit the battery pack.
- 6 Do not touch the terminals with any conductive material.
- 7 Avoid storing battery pack in a container with other metal objects such as nails, coins, etc.
- 8 Do not expose battery pack to water or rain, a battery pack short can use large current flow, overheating, possible burns and even a breakdown.
- 9 Do not store the machine and battery pack in locations where the temperature may reach or exceed 50°C (122°F)
- 10 Do not incinerate the battery pack even if it is severely damaged or completely worn out. The battery pack can explode in a fire.
- 11 Be careful not to drop, shake or strike battery pack.
- 12 Do not charge inside a box or container of any kind. The battery pack must be placed in a well ventilated area during charging.
- 13 Do not leave batteries unused for extended period of time. Recharge the battery every 3–6 months and bring Li-Ion battery to 40–80% charge level before storage.
- 14 Li-Ion batteries are sensitive to high temperature and should be kept in a cool, dry and out of direct light exposure. Ideal temperature for operation and storage is below 25°C (77°F).
- 15 This product is designed with low voltage protection, which prevents the tool from over discharging and prolong battery's life span.

# MAJOR COMPONENTS



# PRODUCT SPECIFICATION

Model No.	K 10640
Voltage	18V DC
No load speed	7000 rpm
Wheel size	125 mm (5")
Total weight	2.35 kg
Charging time	1 hour auto cut off

# OPERATING INSTRUCTIONS

## Installing or removing battery pack (See Fig.1 Fig.2)

Always switch off the machine before insertion or removal of the battery pack.

- 1 To remove the battery pack, push the button on the battery pack and pull the tool unit from the battery pack.
- 2 To insert the battery pack, align the tool unit slides with the battery pack sliding groove and push the tool unit into place. The tool unit can be slipped into the battery pack in two directions.
- 3 Do not force the battery pack in sliding it into tool unit. If the battery pack does not slide in easily, it is not being inserted correctly.

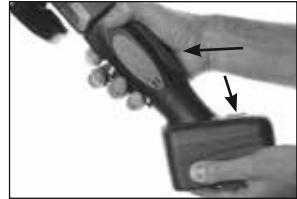


Fig 1

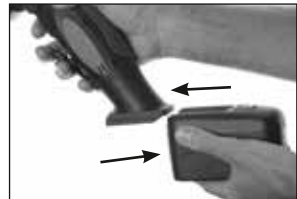


Fig 2

## Charging the Battery Pack (See Fig.3)

- 1 Plug the fast charger into the power source.
- 2 Slide the battery pack into the charger as the arrow direction shown on the charger.
- 3 Push the battery pack into place and make sure the red light on the charger is "ON". The battery pack is now starting the charging cycle.
- 4 After finish the charging cycle, the light will turn to green. The battery pack is now ready for use.
- 5 Your new battery pack is not charged. You need to charge it before use.
- 6 Always use the specified charger to charge the battery. When the battery pack is inserted into the charger correctly, the red light will come on and charging will begin.
- 7 When you charge a new battery pack or a battery pack which has not been used for a long period, it may not accept a full charge. This is a normal condition and does not indicate a problem. You can recharge the battery pack fully after discharging it completely a couple of times.
- 8 Unplug the charger from the power source after finish the charge.
- 9 Please remove the battery from the unplugged charger for storage.



Fig 3

# LED LIGHT ON THE CHARGER



Power On (Green light flashes slowly)



Battery low (Red light stays illuminated)



Battery charged 80% (Green light flashes rapidly)



Battery charged 100% (Green light stays illuminated)



Battery pack temperature is too hot or too cold (Red light flashes slowly)



Battery pack malfunction (Red and Green lights stay illuminated)

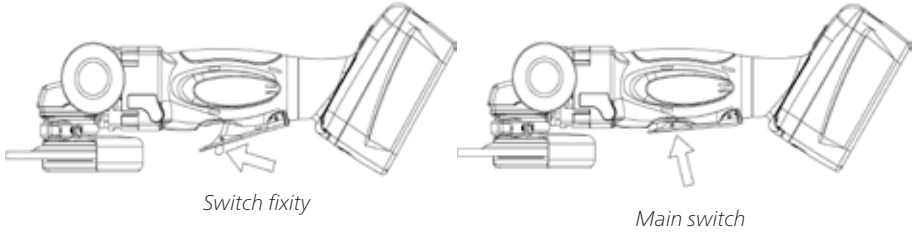
- 1 Charger shall be plugged into a 100-240V a.c outlet only.
- 2 If the battery pack is too hot or too cold, the charger will not fast charge the battery pack and the red Indicator light is "blinking". When the battery pack temperature returns to between 0°C and 50°C, The charger will automatically begin charging.
- 3 If both red and green indicator lights are "ON" the battery pack either does not comply or is defective. Please contact your retailer.
- 4 Do not charge the battery pack in rain, snow or high temperature environment.
- 5 Do not charge battery pack when temperature is below 10°C(50°F)or above 40°C(104°F).
- 6 While charge the cool battery pack (below 5°C) in the warm indoor, keep the battery pack in the room for one hour to warm up before starting the battery pack. A cool battery may charge unsaturated.
- 7 Remove the plug after finishing the charge.
- 8 The charger should be cooled at least one hour after continue charging three times.
- 9 Do not use generator for charging the battery pack.



# OPERATION INSTRUCTIONS

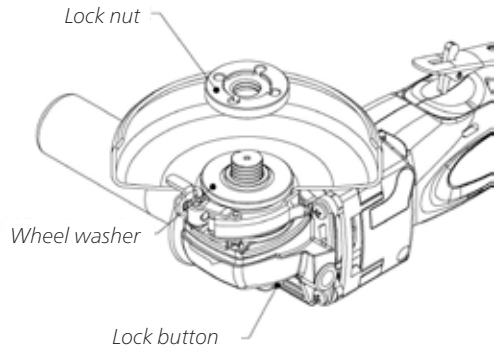
## Switch fixity

For safety concern, push the switch fixity forward, then press main switch upward to operate the tool.

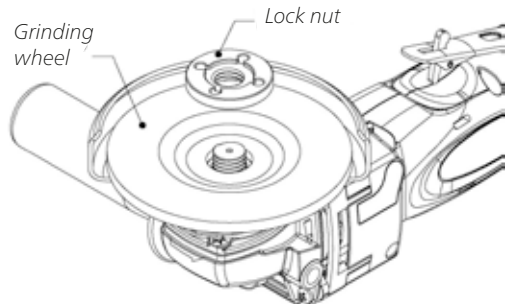


## Installing the grinding wheel

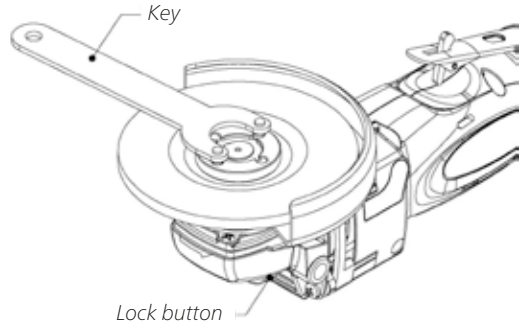
Release the lock nut by pressing the lock button.  
(Use key if not able to release by hand)



Place the grinding wheel on the wheel washer.  
Tighten the lock nut by hand.

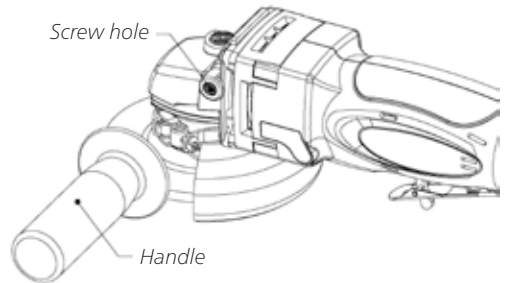


Press the lock button after tightening the lock nut. Use the key to tighten the lock nut. Before using the tool, ensure that the lock button is fully released.



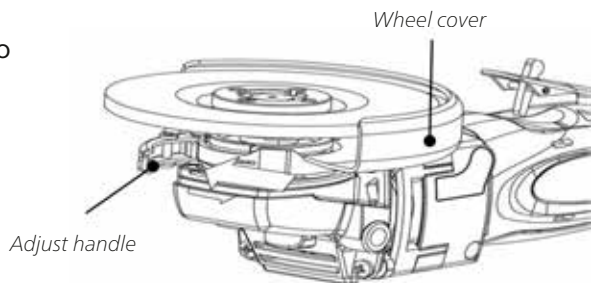
### Installing the handle

Install the handle to the front cover screw hole.

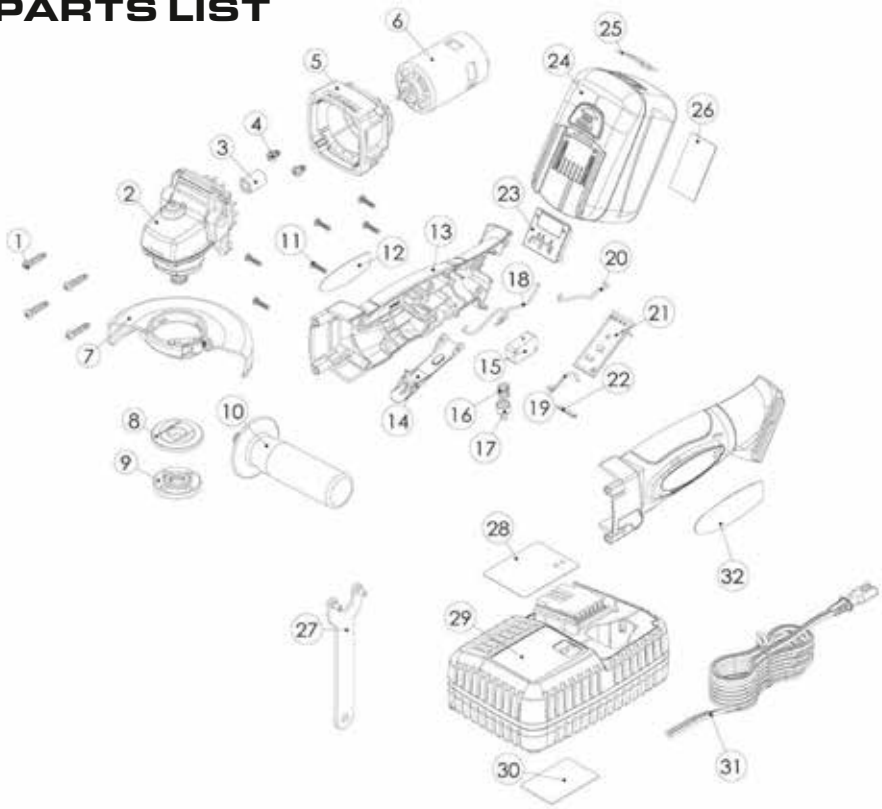


### Adjust the wheel cover

Release the adjust screw to adjust the location of the wheel cover. Tighten the screw after moving.



# PARTS LIST



Pos.	Stock No.	Parts name	Qt
1		Front cover screw	4
2	K 10642	Front cover gearbox ass'y	1
3		Bush	1
4		Motor screw	2
5		Motor fixity	1
6	K10643	Motor	1
7		Grindstone sheath	1
8		Grindstone gasket	1
9		Grindstone nut	1
10		Handle	1
11		Housing screw	6
12		Housing lable (R)	1
13		Housing ass'y	1
14		Trigger ass'y	1
15	K 10645	Main switch	1
16		Trigger lever	1

Pos.	Stock No.	Parts name	Qt
17	K 10644	Trigger lever	1
18		Wire	1
19		Wire	1
20		Wire	1
21	K 10646	Discharge protector	1
22		Trigger pin	1
23		Battery connector	1
24		Battery pack	1
25		Fuel gauge lable	1
26		Battery lable	1
27	K 10647	Key	1
28		Charger upper lable	1
29		Charger	1
30		Charger lower lable	1
31		Power cord	1
32		Housing lable (L)	1



K 10640

[www.kamasatools.com](http://www.kamasatools.com)